

If you are reading this electronically, the Council has saved on printing. For more information on the Modern.gov paperless app, contact Democratic Services

# **Merton Council**

## **Children and Young People Overview and Scrutiny Panel**

**27 April 2021**

### **Supplementary agenda**

4	Covid-19 update	1 - 14
5	Departmental update	15 - 18

This page is intentionally left blank

# Children and Young Person's Scrutiny Panel – 27<sup>th</sup> April 2021

Page 1

**Dr Dagmar Zeuner, Director of Public Health**

Merton Public Health Intelligence

27<sup>th</sup> April 2021

Enquiries: [ben.bezuidenhout@merton.gov.uk](mailto:ben.bezuidenhout@merton.gov.uk)

Agenda Item 4



# Summary key messages

27<sup>th</sup> April 2021

## London overview

- The current estimated London R value is between **0.8 and 1.1** (As of 16<sup>th</sup> Apr)

## Cases (15<sup>th</sup> Apr – 21<sup>st</sup> Apr):

- 7 day case rate (all ages) **25.2 cases per 100,000** (up from 21.9 previous week).
- There were **54** new COVID cases in Merton.
- New COVID variant: estimated to be responsible for 100% of cases in Merton for week ending 14<sup>th</sup> Apr.

## Deaths:

- There were **2** new registered Merton COVID death for the week ending 9<sup>th</sup> Apr.
- In total Merton has seen 481 deaths due to COVID.

## Testing (13<sup>th</sup> Apr – 19<sup>th</sup> Apr / pillar 2 PCR tests only – this excludes Lateral Flow tests):

- 7 day testing rate **199.0 daily tests per 100,000** (up from 138.0 previous week)
- 7 day test positivity decreased to **0.6%**.

# Positive cases per 100,000 and test positivity across London boroughs

27<sup>th</sup> April 2021

For reporting period 01.04.2021 – 07.04.2021

Colour of box illustrates weekly cases per 100,000 for that week

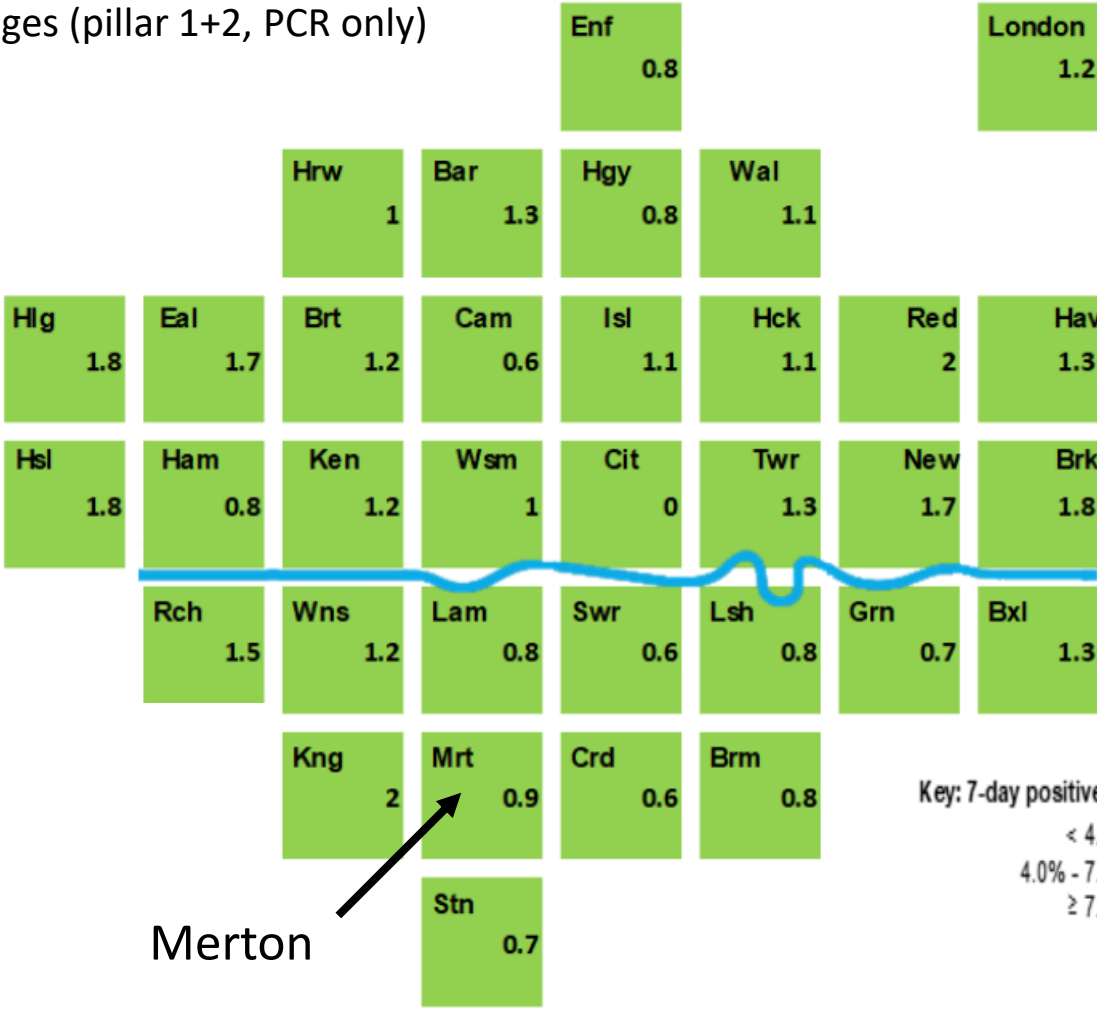
UPDATE NOT AVAILABLE

Positive tests per 100,000 population – all ages (Pillar 1 + 2, PCR only)

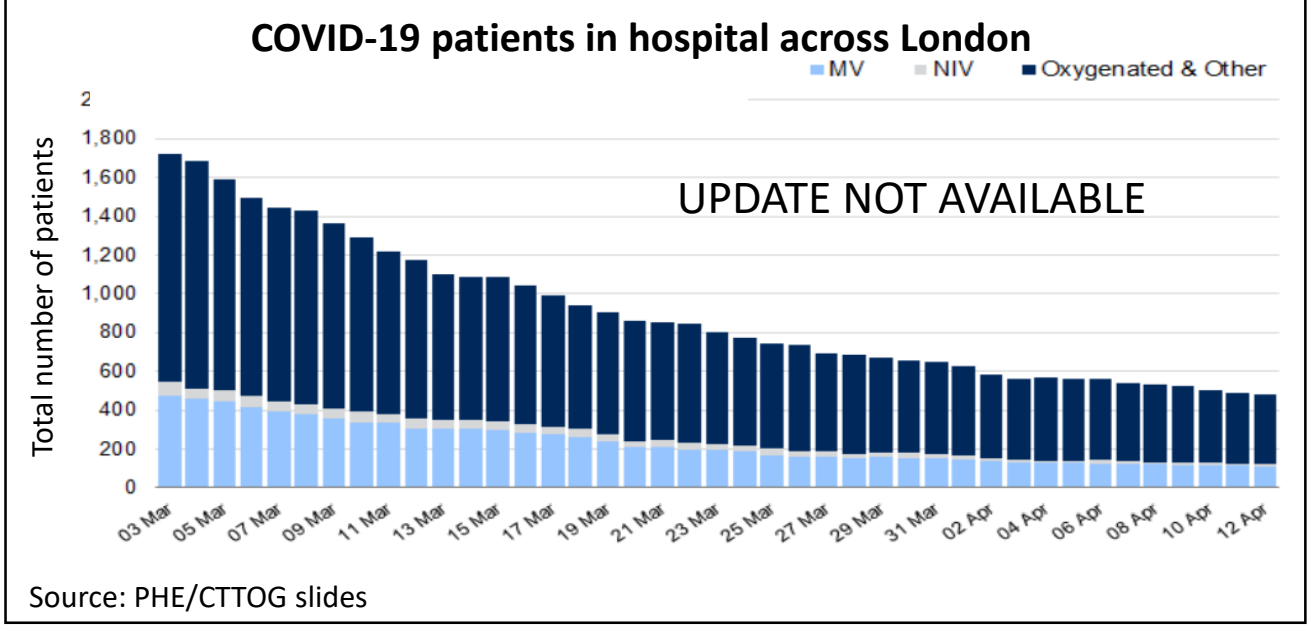
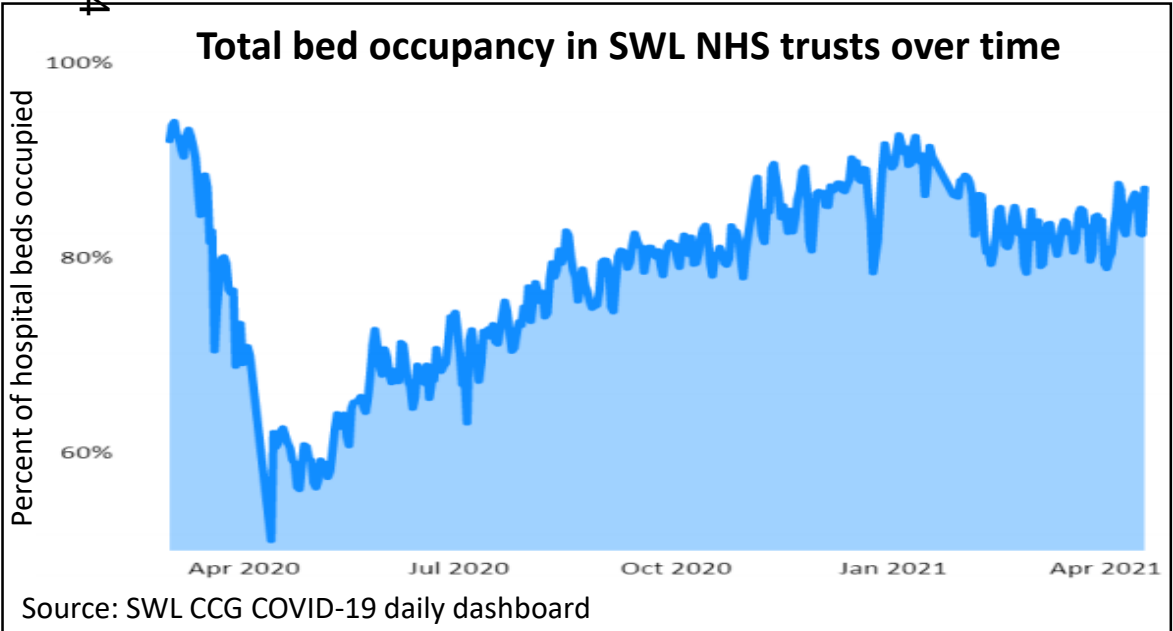
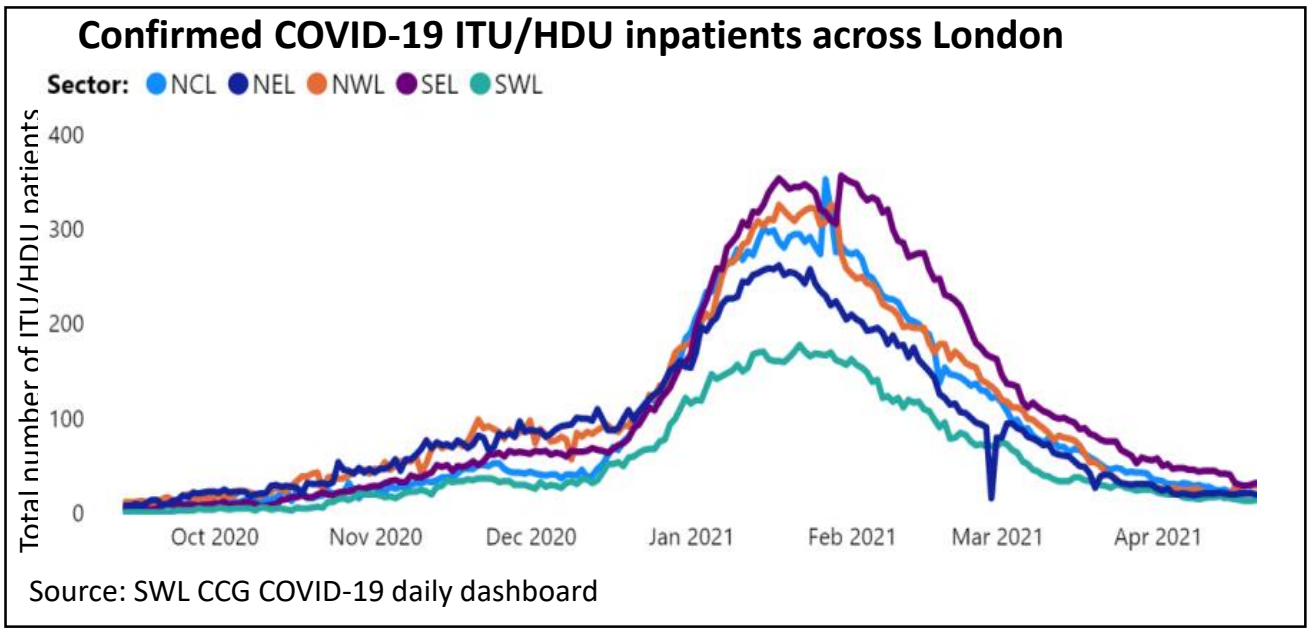
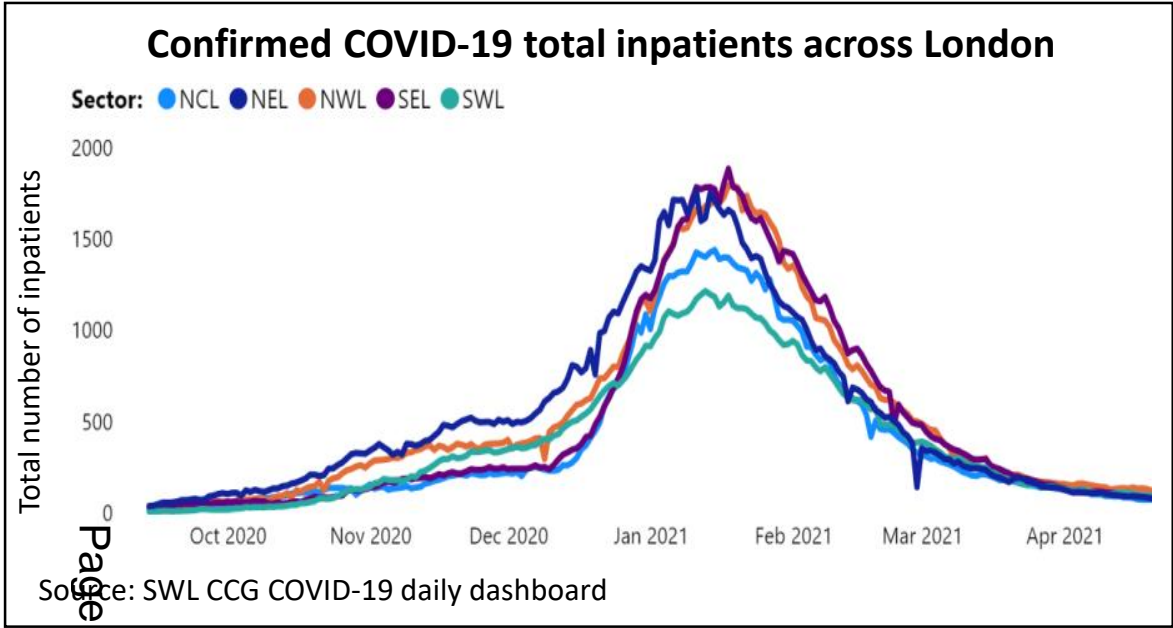


Source: PHE/CTTOG slides

Percentage of tests positive – all ages (pillar 1+2, PCR only)



Source: PHE/CTTOG slides



# Local analysis: COVID-19 cases and testing

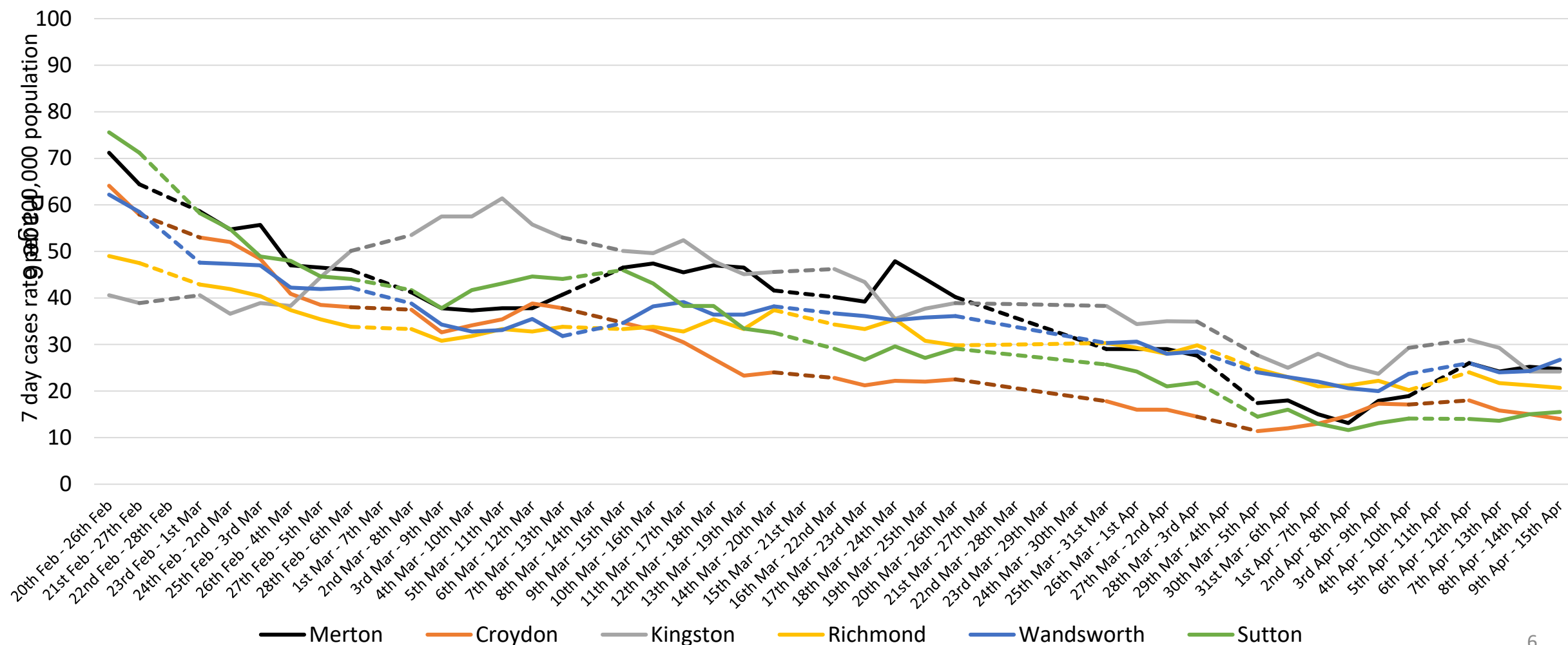
Page 5

# Rolling 7-day rate of confirmed positive cases per 100,000 population in Merton compared to other South West London boroughs (Pillar 1 & 2)

Source: PHE/PHEC Daily Report

Reporting frequency: Daily

**Key message:** Merton has the 2<sup>nd</sup> highest rate of cases among SWL boroughs



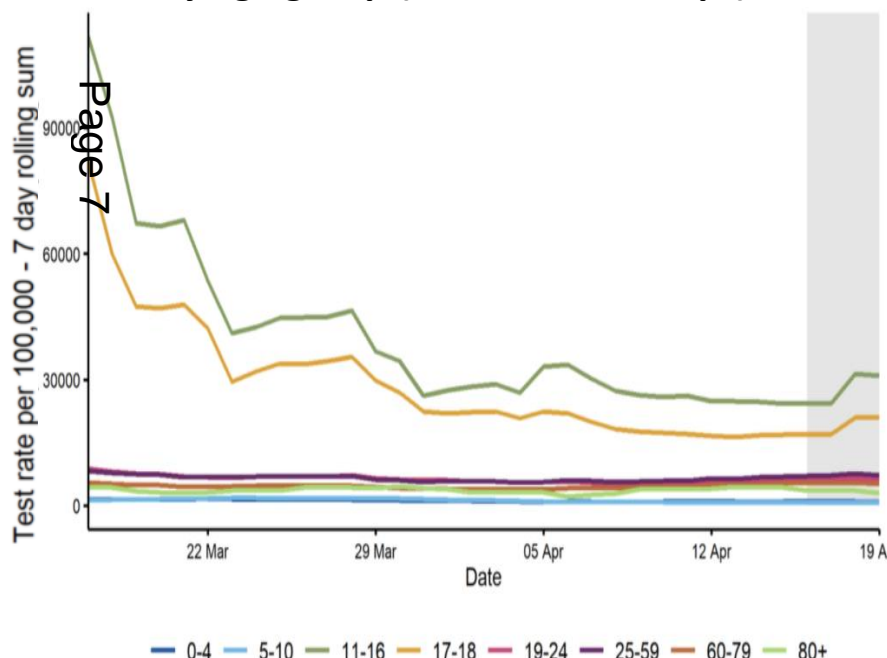
Please note there were reporting gaps – the dotted lines refers to periods when data was not available.

# 7-day rolling COVID-19 cases and testing rates per 100,000 in Merton by age group over time (Pillar 2 PCR only)

## Key messages

- Testing among school age pupils (11-18) have declined in the last few weeks since pupils returned to the class room. There will be close monitoring of this age group and activities around schools in the forthcoming weeks.
- Overall case rates have been low over the past few weeks.
- However, case rates in younger people aged 11-16 are decreasing at a slower rate, but it is important to note these case rates are based on small numbers.

## 7-day rolling testing rate per 100,000 in Merton by age group (17<sup>th</sup> Mar – 19<sup>th</sup> Apr)

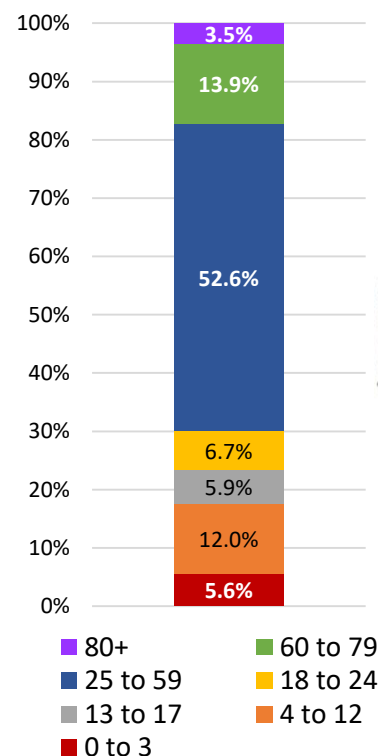


Grey shading: 4 most recent days subject to incomplete data

Note: Some categories changed since last week

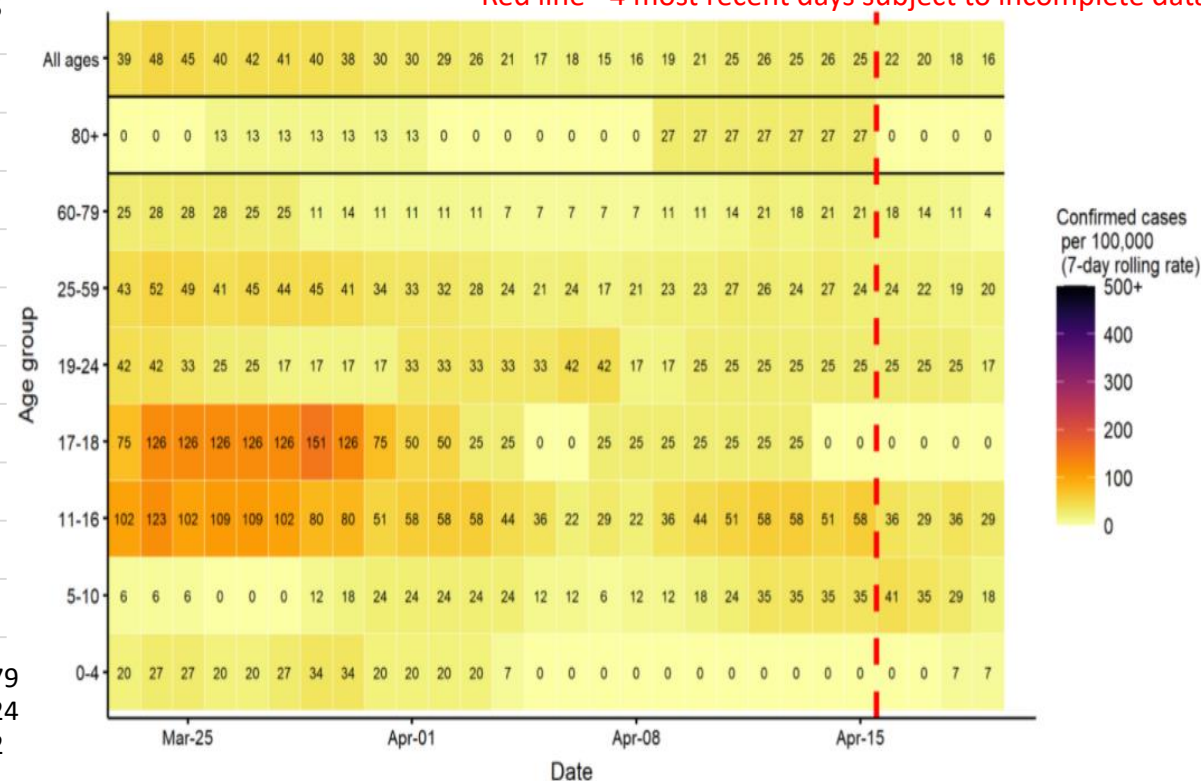
## Merton breakdown by age group, 2021

Source: GLA, 2018



## 7-day rolling case rates per 100,000 by age group in Merton (23<sup>rd</sup> Mar – 19<sup>th</sup> Apr)

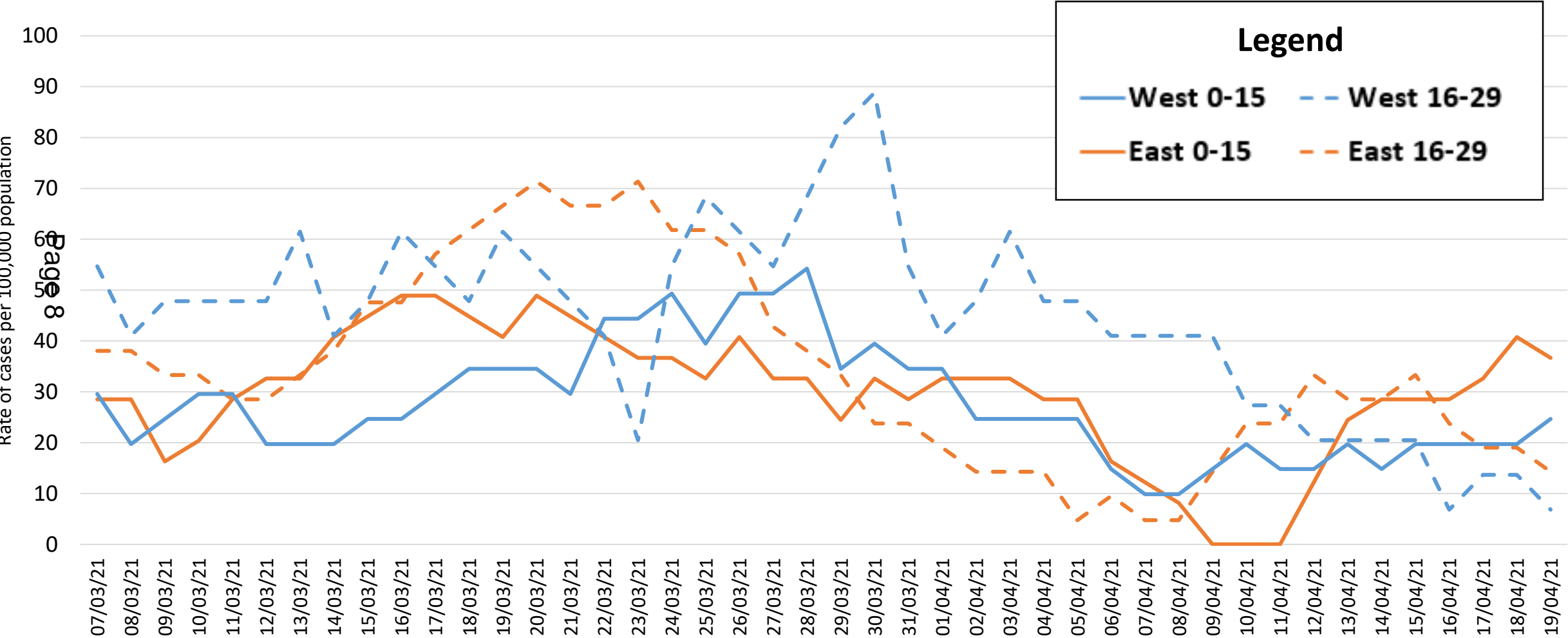
Red line - 4 most recent days subject to incomplete data



# COVID-19 rate of cases per 100,000 7-day rolling rate among younger age groups in East and West Merton (Pillar 1+2, PCR+LFDs)

27<sup>th</sup> Apr 2021

Source: PHE/PHEC Daily Report  
Reporting frequency: Daily

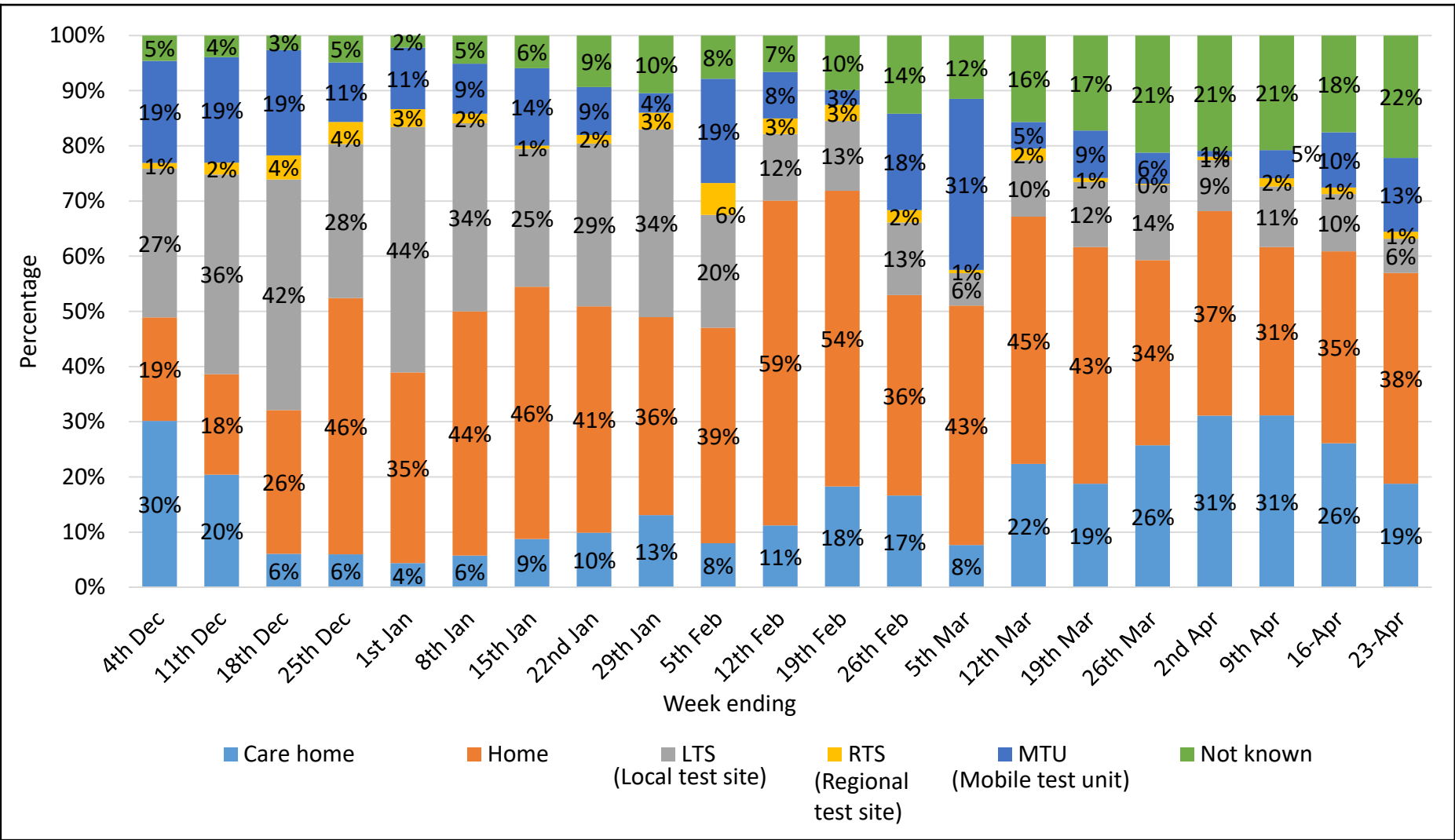


# Covid-19 PCR Test Overview by Merton Residents (1<sup>st</sup> Dec 2020 – 23<sup>rd</sup> Apr\* 2021)

27<sup>th</sup> Apr 2021

## Key Messages:

- Between 18 -59% of tests in Merton residents are at home.
- This averages out at 39% over the 21 week period.
- MTU's account for between 1-31% of all Merton resident tests and 12% over the 21 week time period.
- RTS account for 2% of tests during the 21 week time period (n=2,009)



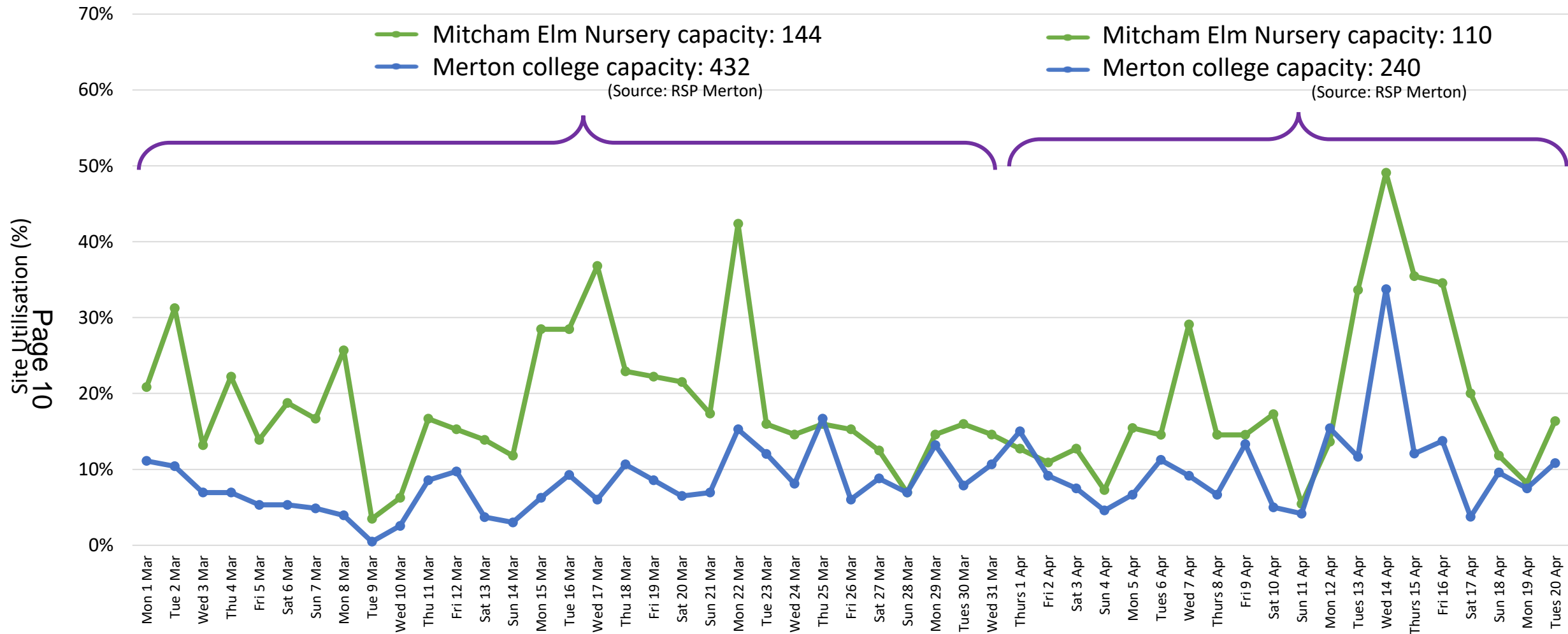
\*Data for last few days not fully complete due to delay in reporting

Note: Only includes pillar 2 and PCR tests and is for tests and not persons, so multiple tests will likely exist

Source: PHE Power BI tool

# Covid-19 PCR LTS Utilisation (17<sup>th</sup> Feb – 20<sup>th</sup> Apr 2021)

27<sup>th</sup> Apr 2021



## Key Messages:

- Average test utilisation has dropped across both sites – please note capacity was dropped on 1<sup>st</sup> Apr
  - Mitcham Elm Nursery: 78% (Jan) → 36% (Feb) → 19% (Mar/Apr)
  - Merton College: 36% (Jan) → 8% (Feb) → 8% (Mar) → 11% (Apr)

Sources: Tests: Regional Dashboard (DHSC) / Capacity: RSP - LB Merton

For internal use only. Not for wider circulation

Enquiries: [ben.bezuidenhout@merton.gov.uk](mailto:ben.bezuidenhout@merton.gov.uk)

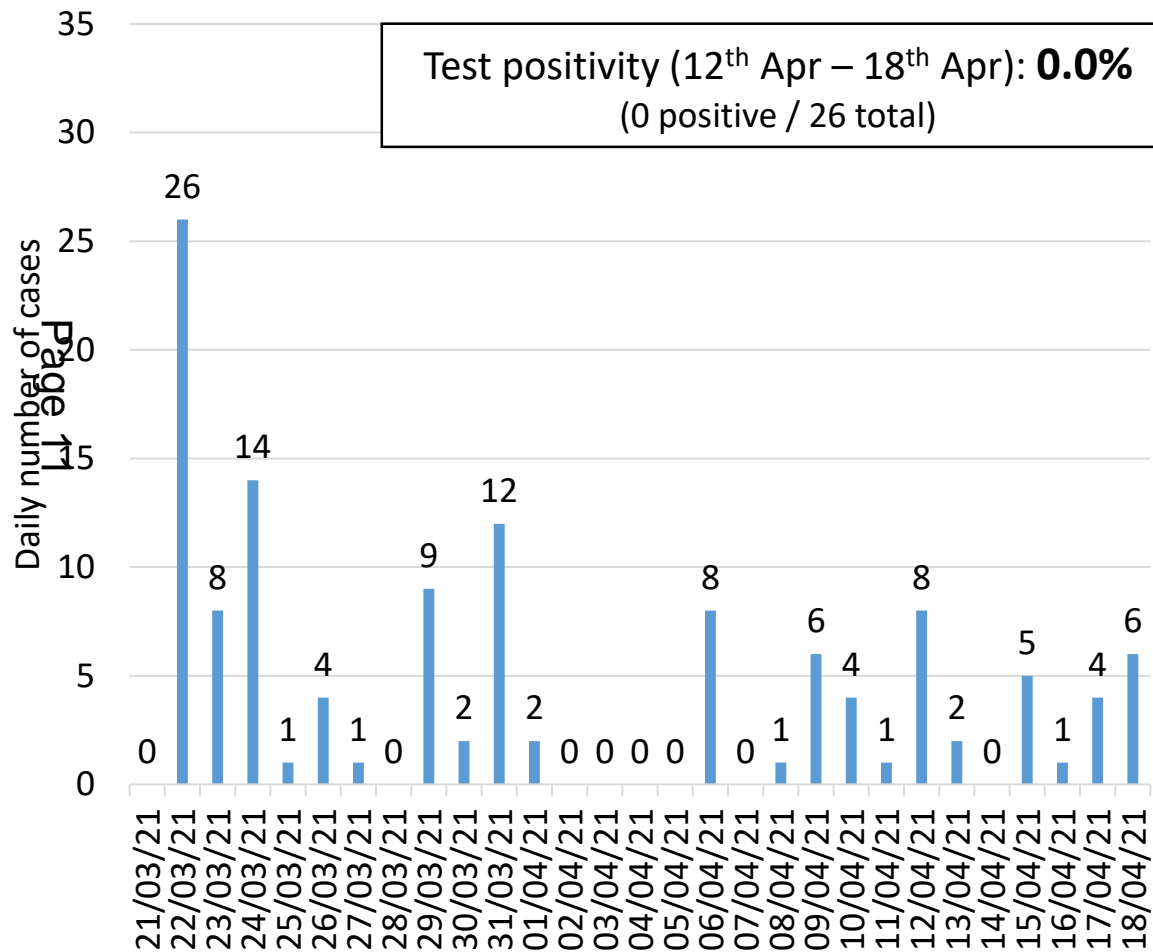
# Daily number of completed LFDs in Merton schools, colleges, and nurseries

27<sup>th</sup> April 2021

Figures reported locally and via PHE regional dashboard

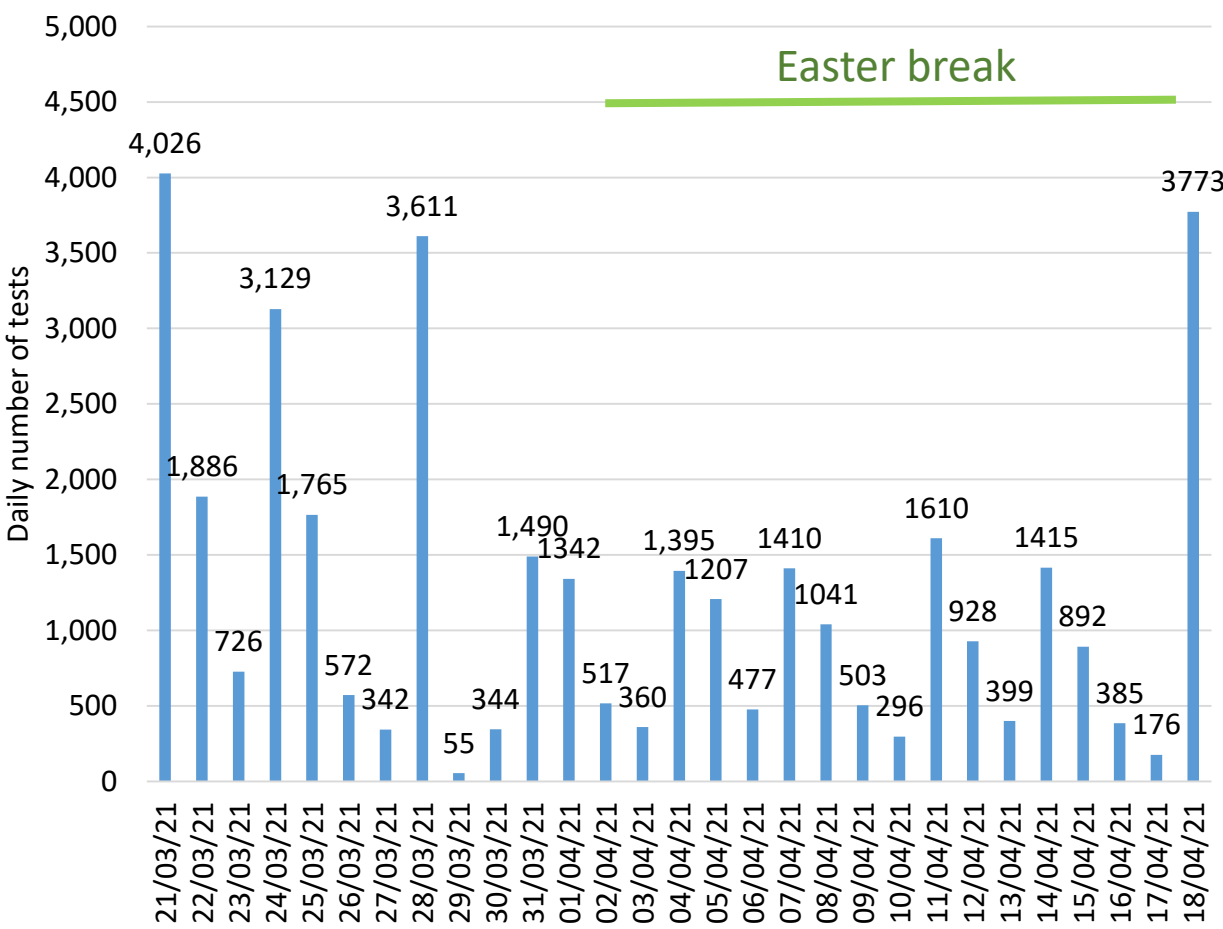
## Nursery figures - reported locally

Test positivity (12<sup>th</sup> Apr – 18<sup>th</sup> Apr): **0.0%**  
(0 positive / 26 total)



Source: Data collected directly from Merton nurseries

## Schools and colleges figures - reported via PHE regional dashboard



Source: PHE Regional Dashboard

# Merton schools update

Page 12

## Key messages

### Update

- Since 8<sup>th</sup> March all schools (primary, secondary, special schools and nursery classes) are open for all pupils (with the exception of students shielding up to 1<sup>st</sup> April)
- Schools (and school transport) continue to look to their updated risk assessments to ensure that measures are in line with government guidance to mitigate risk
- Systems of control remain in place – face coverings expected to no longer be recommended from 17<sup>th</sup> May
- Continued coordination with LCRC for outbreak management
- Since 12<sup>th</sup> April all parents able to access wraparound and extra-curricular provision
- Holiday and after school clubs now open (with restrictions as per guidance)
- Indoor and outdoor sports competitions now permitted (with restrictions as per guidance)
- Local educational visits now permitted as of 12<sup>th</sup> April, residential visits no earlier than 17<sup>th</sup> May

### Attendance figures

- Pupil attendance since return has been good in the majority of schools.
- The average attendance (from the schools that completed the DfE return) on 20<sup>th</sup> April was 95.5%.

## Key messages

### Secondary schools

- Schools moved to home testing model (for pupils, following the first 3 onsite tests)
- Schools have retained small onsite ATS as per guidance
- Schools continue to provide pupils and staff with home LFD test kits to test twice weekly
- Positive LFDs are required to be followed up with a confirmatory PCR test within 2 days
- In line with national guidance, parents of pupils are also encouraged to test twice weekly

### Primary schools

- Merton primary schools are providing home LFD test kits for staff to test twice weekly
- Positive LFDs are required to be followed up with a confirmatory PCR test within 2 days
- Pupils in primary schools are not conducting asymptomatic testing as per guidance. Parents of pupils encouraged to access home asymptomatic LFD testing as per national programme

# CSF – Departmental Update

Presented to  
Children and Young People's Scrutiny Panel  
April 2021

# Director's Update

## Senior Management Team Updates

- Director appointment
- Interim arrangements
- Recruitment for Permanent Assistant Directors

## Other Department Updates (including Education and Early Help)

- The Youth Justice Service has received its notification for the HMIP inspection. We are working within the service to prepare all the relevant documents and evidence to showcase the work we have undertaken. The HMIP inspection will commence 17<sup>th</sup> May 2021 for 5 days.
- A formal HR consultation regarding the proposal to re-structure the CSC&YI division commenced on the 29<sup>th</sup> March 2021. The consultation phase is due to close on the 21<sup>st</sup> May. All staff feedback received will be considered with a view to decide on a way forward and mobilise to a new structure with vacant roles filled by September 2021
- Transformation and recovery programme - report to come to next OSP meeting
- Schools return updates
- Holiday and Food Programmes
- Early Help Strategy
- Updates from last OSP re Lavender Nursery/MMEP

# Children's Social Care & Youth Inclusion Update

## Demand for services

- The number of contacts and referrals received during the year is broadly the same as 2019/20.
- The last six months have seen a sustained period where the number of assessments completed each month is comparable with the short-term peaks of one or two months in previous years. Managers and practitioners report increased complexity of needs and issues arising.
- We are working with more children in the system. In March 2020, we worked with 397 children. This increased by 26% to 542 in March 2021.
- The number of children on plans has increased and is at higher levels than last year. However, we have seen a decrease in the number of children in our care.

Page 17

Some possible hypothesis for the changes in demand include:

- The increase in families worked with is at a lower level of need in the context of most universal and some targeted services not being available during the pandemic.
- A higher proportion than usual of children in our care turning 18. In October 2020, a total of 9 children turned 18.
- During the pandemic we have worked with less unaccompanied asylum seeking children
- In the Autumn 2020 care proceedings re-commenced after a period of stand-still. Merton has secured a number of permanence arrangements for children.

## Management Actions:

- Continued focus on recruitment of additional social workers using the agreed short-term funding
- Temporary additional management capacity to support staff and oversee additional case work
- Maximisation of capacity within the Social Workers in Schools project
- Review of increased numbers of children with a child protection plan to clarify the factors underpinning this increase and opportunities to safely reduce the number of children with plans
- Review of alternative supports and interventions for children and families with lower levels of need
- Consideration of a Business Case for extension of the temporary funding arrangements for additional social workers

This page is intentionally left blank